

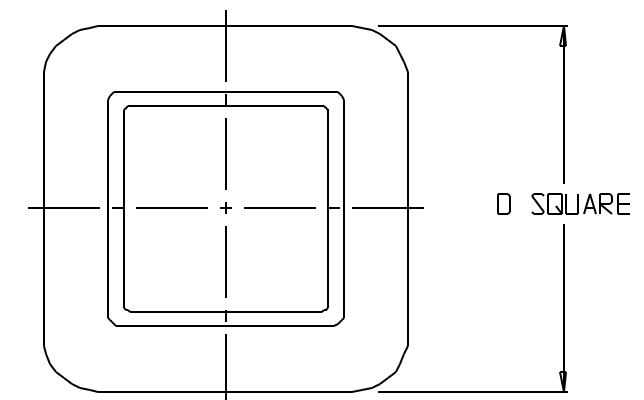
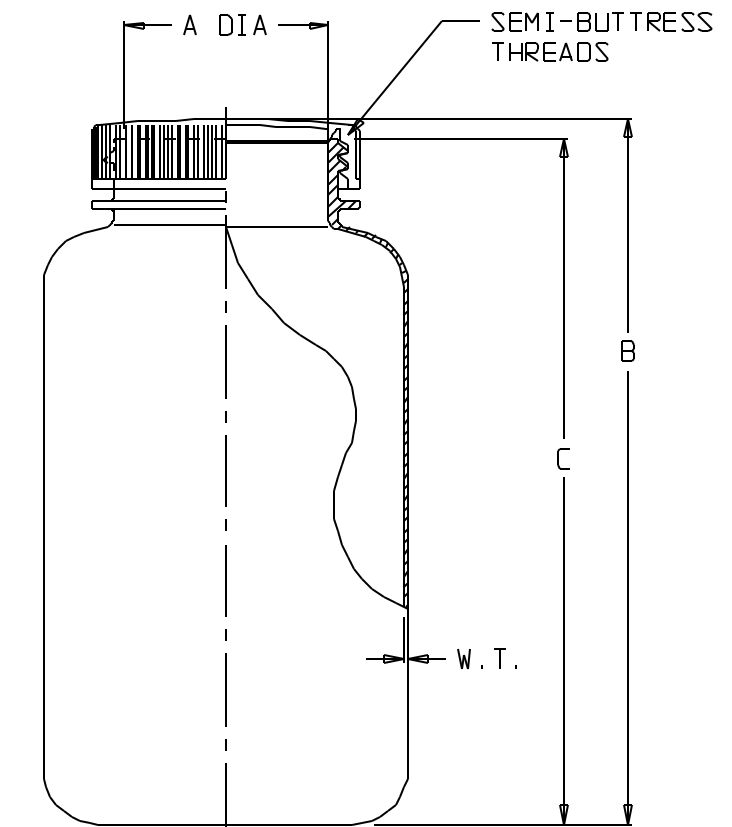
CATALOG NO.	NOMINAL CAPACITY, (oz)					MATERIALS	
						BOTTLE	CLOSURE
312110	2	6	8	16	32	PP	PP
312114	2	6	8	16	32	HDPE	PP

SIZE CODE.....:	-0002		-0006		-0008	
SIZE (NOM VOL mL/oz):	60/ 2		175/ 6		250/ 8	
NOM. BRIM CAP. (mL):	68		185		290	
NECK FINISH (mm):	28-415		38-415		43-415	
THREAD (T.P.I.):	6		6		6	
NOM. WEIGHT W/CLOSURE (gns):	15		33		36	
	INCH	MM	INCH	MM	INCH	MM
A (NECK I.D.):	0.82 ± .02	20.8±0.5	1.120 ± .025	28.4±0.6	1.280 ± .025	32.5±0.6
B (HT. W/CLOSURE):	3.28 ± .06	83.3±1.5	4.17 ± .08	105.9±2.0	4.56 ± .08	115.8±2.0
C (HT. W/O CLOSURE):	3.16 ± .06	80.3±1.5	4.04 ± .08	102.6±2.0	4.39 ± .08	111.5±2.0
D (SQUARE):	1.45 ± .03	36.8±0.8	2.05 ± .05	52.1±1.3	2.44 ± .06	62.0±1.5
W.T.(NOM. WALL THK):	0.045	1.14	0.060	1.52	0.060	1.52

SIZE CODE.....:	-0016		-0032	
SIZE (NOM VOL mL/oz):	500/16		1000/32	
NOM. BRIM CAP. (mL):	570		1170	
NECK FINISH (mm):	53-415		63-415	
THREAD (T.P.I.):	6		6	
NOM. WEIGHT W/CLOSURE (gns):	62		110	
	INCH	MM	INCH	MM
A (NECK I.D.):	1.72±.03	43.7±0.8	2.07±.04	52.6±1.0
B (HT. W/CLOSURE):	5.73±.08	145.5±2.0	7.12±.09	180.8±2.3
C (HT. W/O CLOSURE):	5.55±.08	141.0±2.0	6.94±.09	176.3±2.3
D (SQUARE):	2.97±.06	75.4±1.5	3.72±.07	94.5±1.8
W.T.(NOM. WALL THK):	0.065	1.65	0.080	2.03

NOTES:

1. ALL DIMENSIONS ARE NOMINAL AND IN INCHES AND MILLIMETERS UNLESS OTHERWISE NOTED.
2. THIS IS NOT A PRODUCTION DRAWING, BUT IS FOR INFORMATIONAL PURPOSES ONLY, AND IS SUBJECT TO CHANGE WITHOUT NOTICE.



SPECS ON BACK

NOT TO SCALE

CONFIDENTIAL

THIS PRODUCT SPECIFICATION SHEET CONTAINS CONFIDENTIAL AND/OR PROPRIETARY INFORMATION AND IS TO BE USED ONLY FOR THE EXPRESSED PURPOSES AGREED UPON BY AN AUTHORIZED OFFICER OF THERMO FISHER SCIENTIFIC.

**ThermoFisher**  
SCIENTIFIC

Thermo Fisher Scientific  
75 Panorama Creek Drive  
Rochester, NY 14625-2385, USA

MADE	MCC	APP'D	RAJ	PSS 31-211X-XXXX-1	REV.	0595
CK'D	DM 5/24/95					
DESCRIPTION:				SQUARE, WIDE-MOUTH LAB QUALITY BOTTLES		